

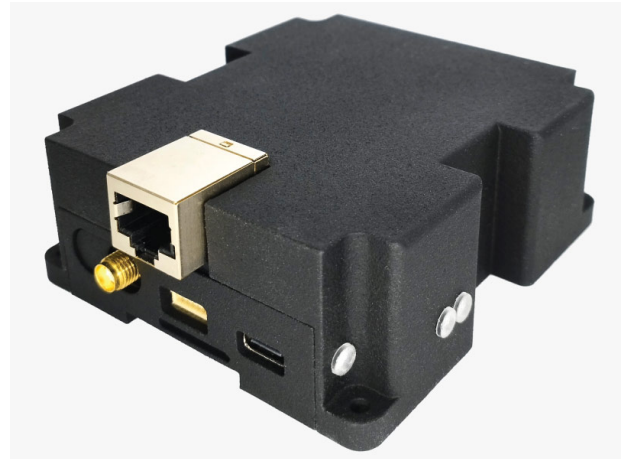
# RTK Base Station

Includes:

- 1 RTK Base Station



More info about the product!



RTK Base Station SKU is: AS-PRO-CORS-L125ETH-00

Get a discounted bulk price on this product for orders of 50 units or more. Contact us at [info@ardusimple.com](mailto:info@ardusimple.com) to get a quote.

## Description

Ready to use full band full constellation RTK Base for 24/7 use.

Good to know:

- This product is compatible but doesn't include [multiband GNSS antenna](#), which is necessary to use the product.
- Compatible with existing CORS networks (Continuously Operating Reference Station)

## Specifications

### Mosaic-X5 features

- Millimeter level precision
  - <1cm with a base station up to 35km
  - <1cm with NTRIP up to 35km
  - <1.2m in standalone mode
  - <0.6m standalone with SBAS coverage
- Update rate
  - Default: 1Hz
  - With maximum performance: up to 100Hz
- Multi band: L1, L2 and L5 support, 448 hardware channels
- Multifrequency and Multiconstellation:
  - GPS: L1C/A L1PY L2C L2P L5
  - GLONASS: L1CA L2CA L2P L3 CDMA
  - Galileo: E1 E5a E5b E5 AltBloc E6
  - BeiDou: B1I B1C B2a B2I B3
  - QZSS: L1C/A L2C L5
  - Navic: L5
  - SBAS: WAAS, EGNOS, MSAS, GAGAN, SDCM (L1 L5)
- Start-up times:
  - Cold start: <45s
  - Warm start: <20s
  - Re-acquisition: 1s
- Protocols:
  - Septentrio Binary Format (SBF)
  - NMEA 0183, v2.3, v3.03, v4.0
  - RINEX v2.x, v3.x
  - RTCM v2.x, v3.x (MSM included)
  - CMR v2.0 (out/in), CMR+ (input only)
- Interfaces (**check user guide to verify which are available**):
  - USB
  - UART
  - XBee
  - Timepulse
  - Event
- Base and Rover functionality
- Operating temperature Range: -40 to +85deg
- Certification: CE, WEEE, ISO 9001-2015
- Documentation: RED, RoHS

RTK Base Station includes free basic technical support. Contact [info@ardusimple.com](mailto:info@ardusimple.com) for more information.

Data and descriptions in this document are subject to change without notice. Product photos and pictures are for illustration purposes only and may differ from the real product appearance.